

CLIP Outcome Surveys 2006

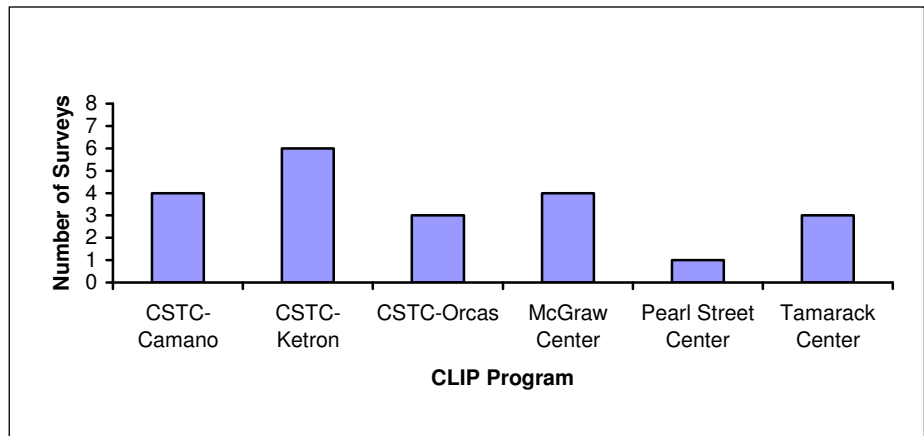
The CLIP outcome survey was developed jointly by the CLIP Quality Steering Committee, the CLIP Parent Steering Committee and the CLIP Directors' Association. The purpose is to gather standardized data regarding important outcome indicators for children and youth served by the CLIP programs. Respondents are asked to report, to the best of their knowledge, the child's current status and experiences since discharge.

The CLIP Administration conducts the outcome survey with the child or youth's parent(s) or legal guardian(s) approximately six months after discharge from a CLIP program. The survey consists of twenty-four questions or statements to elicit objective data regarding the discharged child or youth's current status. Information is requested about living situation, educational involvement, relationships with family, hospitalizations, juvenile justice involvement and current treatment interventions. The survey also includes questions regarding current perspectives about the care provided in the CLIP program.

This report presents outcome survey responses collected for children and youth discharged during calendar year 2006. In total, there were 21 survey respondents, including 18 family members and 3 professionals. This is a response rate of 20% (21/103 discharges).¹

Number of Surveys Completed

While the survey responses are reported for the CLIP system as a whole, this chart shows the breakdown of the number of responses by CLIP program. The number of responses for Child Study & Treatment Center (CSTC) is further broken down by cottage.



- n = 21

¹ Children or youth admitted under RCW 10.77 or transferred from a Juvenile Rehabilitation institution for a 14-day evaluation (RCW 71.34.795) are excluded from the survey process, unless the child or youth is subsequently approved for continued stay as a voluntary or involuntary child or youth.

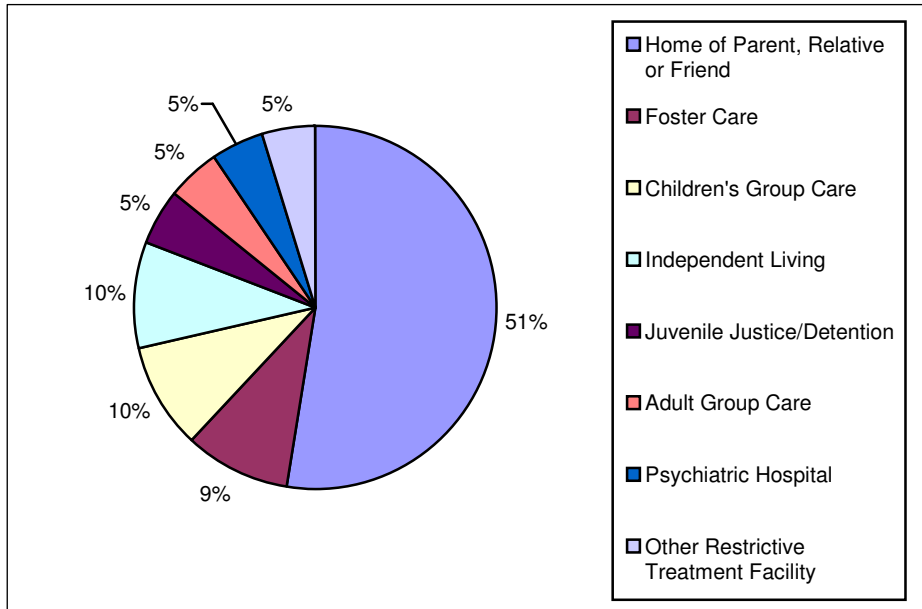
Where is the child or youth currently living?

Sixty percent of respondents reported that the child or youth was living at home with parents, foster parents or friends.

Seventy-one percent of respondents reported that the child or youth continues to live in the discharge placement.

Of the children or youth who have moved since discharge, it was reported that five moved once and one moved three times.

- n = 21

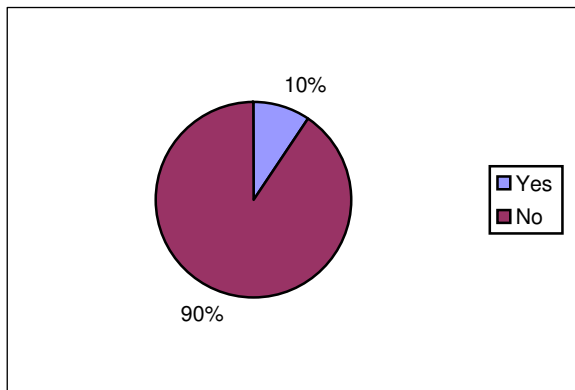


Has the child or youth been admitted to a psychiatric hospital since discharge from the CLIP Program?

Ninety percent of respondents reported that the child or youth has not been hospitalized since discharge from the CLIP Program.

Of the children or youth who have been hospitalized since discharge, it was reported that two have been hospitalized twice.

- n = 21

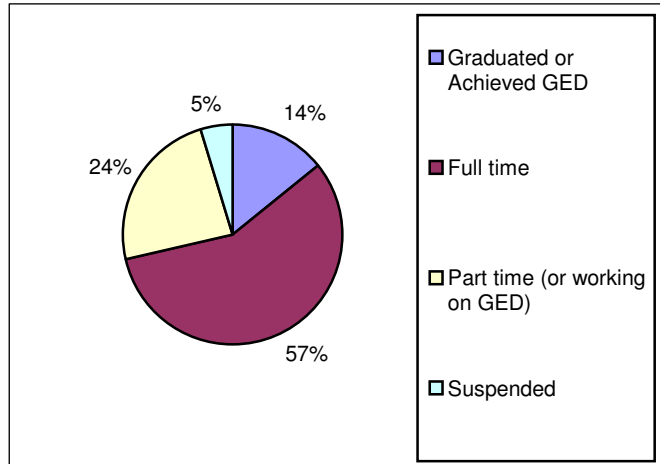


What is the child or youth's current enrollment in school?

Eighty-one percent of respondents reported that the child or youth was enrolled in school.

Fourteen percent of the respondents reported that the youth had graduated from high school or achieved his or her GED. (Note: this may have been achieved while receiving treatment in the CLIP Program.)

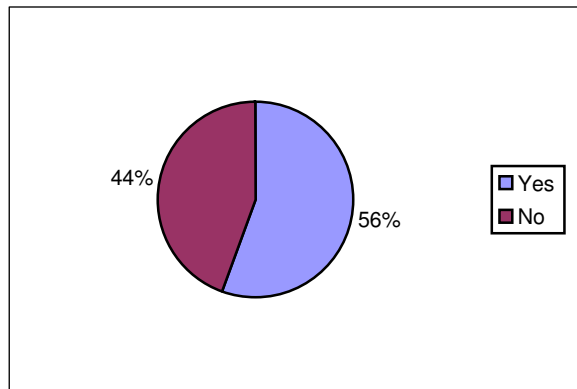
- n = 21



Is child or youth experiencing academic problems in school?

Forty-four percent of the respondents reported that the child or youth does not experience academic problems in school.

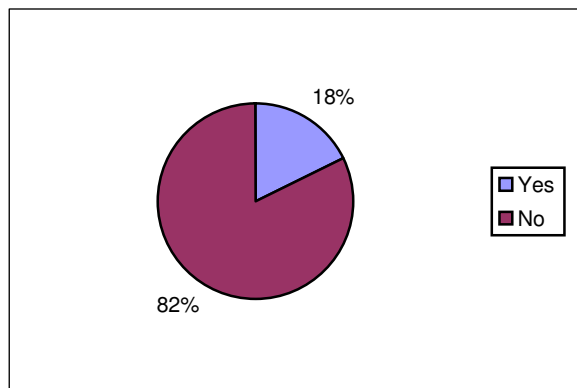
- n = 18



Is child or youth experiencing attendance problems in school?

Eighty-two percent of respondents reported that the child or youth does not experience attendance problems in school.

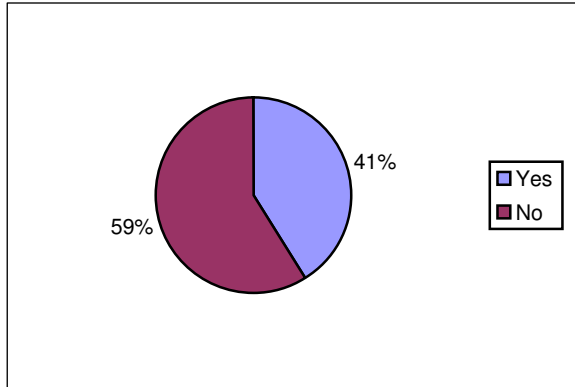
- n = 17



Is child or youth experiencing behavior problems in school?

Fifty-nine percent of respondents reported that the child or youth does not experience behavior problems in school.

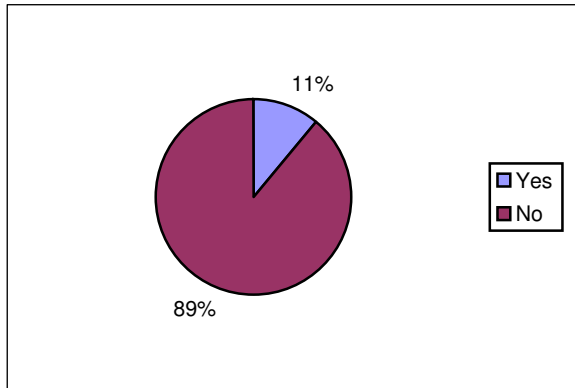
- n = 17



Is the child or youth currently employed?

Eleven percent of respondents reported that the child or youth is currently employed.

- n = 18

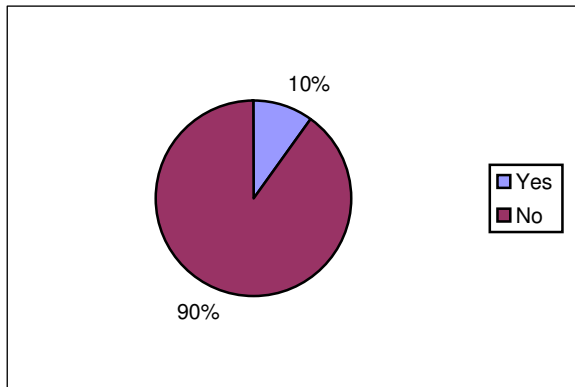


Has the child or youth been placed in detention or jail since discharge from the CLIP Program?

Ninety percent of respondents reported that the child or youth has not been placed in detention or jail since discharge from the CLIP Program.

Of the two youth who have been placed in detention or jail, it was reported that one was placed once. One respondent did not know how many times.

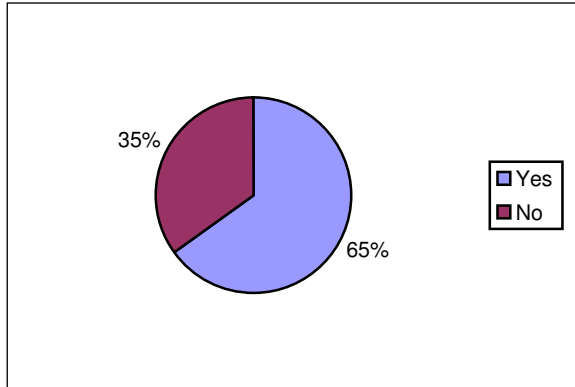
- n = 20



Is the child or youth currently receiving outpatient mental health services?

Sixty-five percent of the respondents reported that the child or youth receives outpatient mental health services.

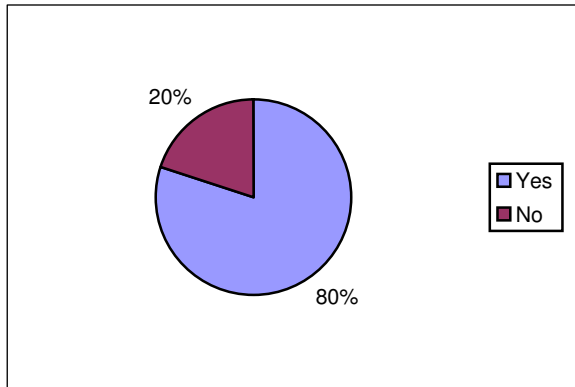
- n = 20



Is the child or youth currently taking psychiatric medications?

Eighty percent of the respondents reported that the child or youth takes psychiatric medications.

- n = 20

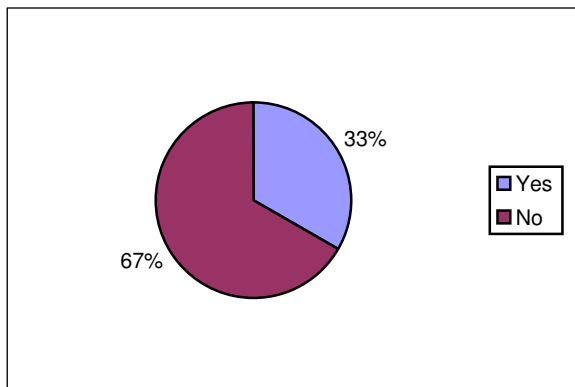


Is the child or youth currently receiving other treatment services?

Thirty-three percent of the respondents reported that the child or youth receives other treatment services.

Examples of other treatment services reported include family counseling, school counseling and specialized therapy.

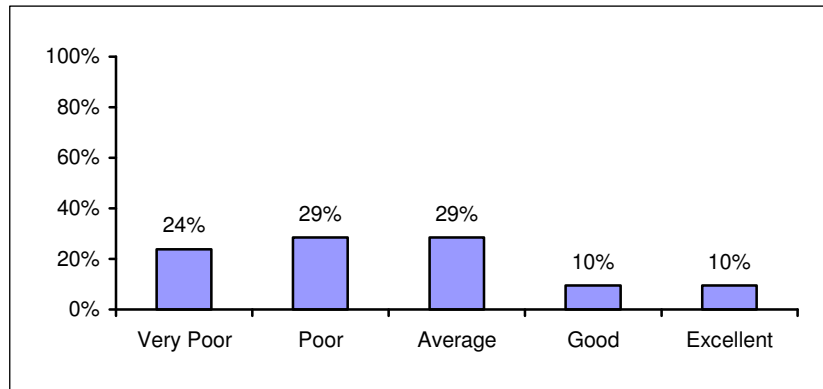
- n = 18



How would you rate the child or youth in terms of relationships with friends?

Twenty percent of the respondents reported that the child or youth has “good” or “excellent” relationships with friends.

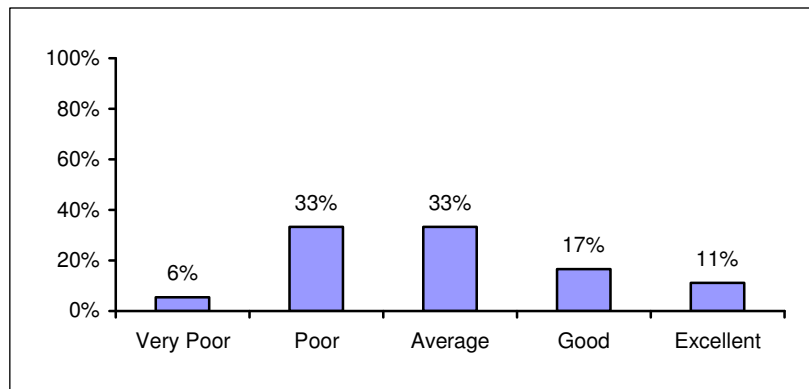
- n = 21



How would you rate the child or youth in terms of relationships with siblings?

Twenty-eight percent of respondents reported “good” or “excellent” relationships between the child or youth and siblings.

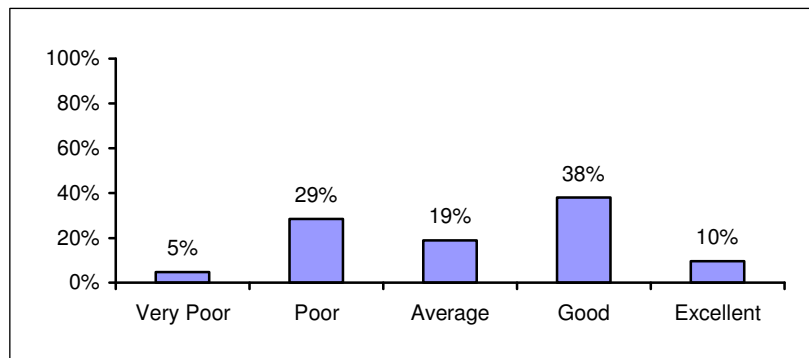
- n = 18



How would you rate the child or youth in terms of relationships with parent(s)/primary care giver(s)?

Forty-eight percent of the respondents reported “good” to “excellent” relationships between the child or youth and the parent or primary caregiver.

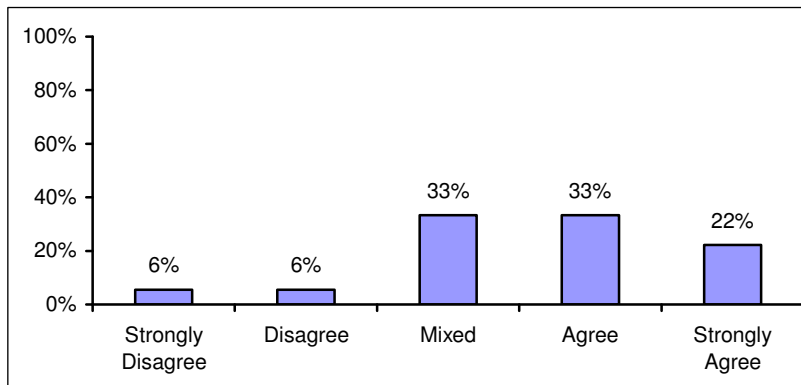
- n = 21



What is your level of agreement with this statement: “The CLIP Program helped me gain skills and strategies to cope.”

Fifty-five percent of respondents reported that the CLIP Program helped them gain skills and strategies to cope.

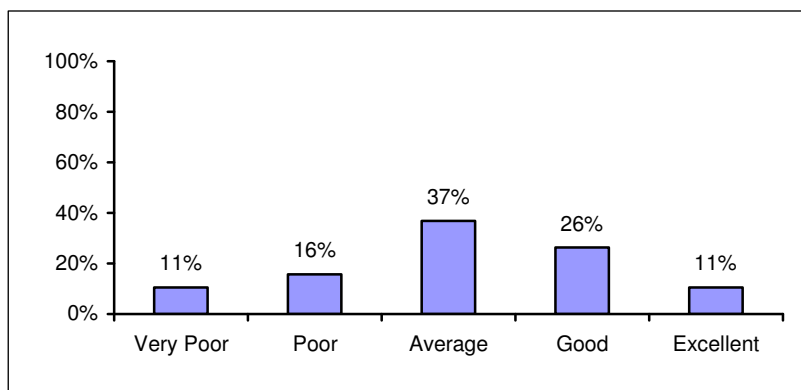
- n = 18



Rate the quality of the discharge plan with regard to the support services necessary to maximize your child’s likelihood of success (school, mental health care, medication, recreation, effective plan for crisis, etc.)

Thirty-seven percent of the respondents rated the quality of the discharge plan as “good” or “excellent”.

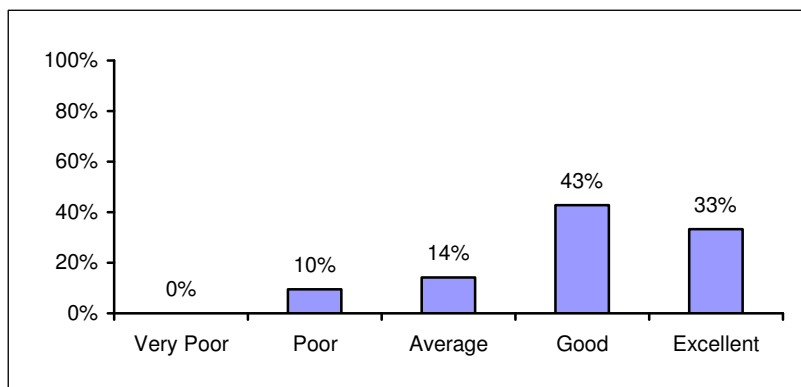
- n = 19



In retrospect, rate the overall effectiveness of care provided by the CLIP Program.

Seventy-six percent of respondents rated the overall effectiveness of care provided as “good” or “excellent”.

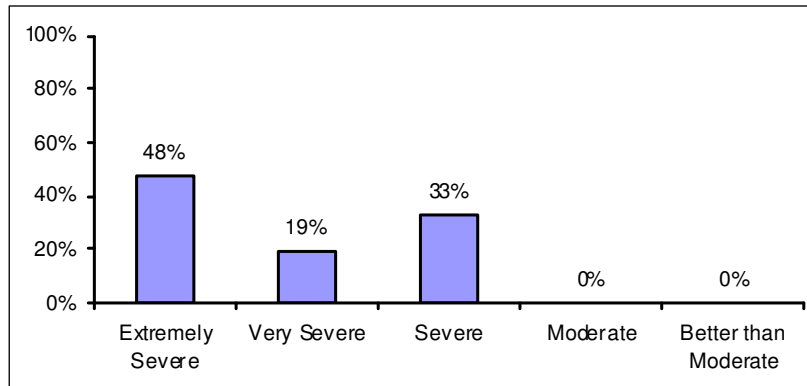
- n = 21



Before admission to the CLIP Program, rate the severity of the problems that were disrupting the child or youth’s well-being and functioning.

All of the respondents rated the severity of problems prior to CLIP admission as “severe”, “very severe” or “extremely severe”.

- n = 21



Rate those problems now:

Seventy-nine percent of the respondents rated the current severity of problems as “moderate” or “better than moderate”, with twenty-two percent of the respondents rating current severity of the problems as “severe” or “very severe”. No current severity problems were reported as “extremely severe”.

- n = 19

